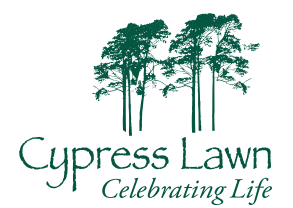




## GENERAL PRICE LIST





## GENERAL PRICE LIST

**These prices are effective March 1, 2024.** They are subject to change without notice. The goods and services shown below are those that we can provide to our customers. You may choose any items that you desire. However, any funeral arrangements you select will include a charge for our basic services and overhead. If legal or other requirements mean you must buy any items you did not specifically ask for, we will explain the reason, in writing, on the statement we provide describing the funeral goods and services you selected.

Prior to drafting any contract for goods or services, the responsible party or the decedent's survivor who is handling the funeral arrangements is entitled to receive a copy of any preneed agreement in the possession of the funeral establishment that has been signed and paid for, in full or in part, by or on behalf of the decedent.

All persons making funeral arrangements are entitled to a copy of the "Consumer Guide to Funeral & Cemetery Purchases" from the California State Department of Consumer Affairs prior to drafting a contract for funeral services. A copy of this guide will be provided for you; it is also available on the internet at [www.dca.ca.gov/cemetery](http://www.dca.ca.gov/cemetery).

### **Cypress Lawn Funeral Home & Memorial Park**

1370 El Camino Real,  
Colma, CA 94014  
(650) 550-8808  
FD# 1797

### **Sneider & Sullivan & O'Connell's Funeral Home & Cremation Service**

977 S. El Camino Real,  
San Mateo, CA 94402  
(650) 343-1804  
FD# 230

### **Miller-Dutra Coastside Chapel**

645 Kelly Ave, Half  
Moon Bay, CA 94019  
(650) 726-4474  
FD# 40

### **Crosby-N. Gray & Co. Funeral Home & Cremation Service**

2 Park Rd,  
Burlingame, CA 94010  
(650) 342-6617  
FD# 96

## ITEMIZED PRICES FOR PROFESSIONAL SERVICES, FACILITIES, AND TRANSPORTATION

### **BASIC SERVICES OF FUNERAL DIRECTOR AND STAFF .....\$3,395**

This fee is for our basic services and overhead and will be added to the total cost of the funeral arrangements that you select. (This fee is already included in our charges for direct cremations, immediate burials, and forwarding or receiving of remains.)

**Our fee for the services of funeral directors and staff includes, but is not limited to:** Personnel available 24 hours a day, 365 days a year to respond to the initial call for service; arrangement conferences; coordination of plans with the cemetery, crematory, and/or other parties involved in the final disposition of the deceased; processing and filing of necessary documents associated with the funeral services, including death certificates, burial, or transit permits; assistance with obituaries and/or death notices; and Social Security notification and clerical assistance with Veterans or other benefits.

### **TRANSFER FROM PLACE OF DEATH TO THE FUNERAL HOME ..... \$695**

Within 35 miles of Cypress Lawn; beyond 35 miles, add \$4 per mile measured one way.

### **EMBALMING ..... \$995**

Except in certain special cases, embalming is not required by law. Embalming may be necessary, however, if you select certain funeral arrangements, such as a funeral with a viewing. If you do not want embalming, you usually have the right to choose an arrangement that does not require you to pay for it, such as a direct cremation or immediate burial.

*It is the policy of Cypress Lawn Funeral Home to require embalming for public viewing or visitation.*

### **OTHER PREPARATION OF REMAINS .....\$400**

Including shampoo and hairstyling, cosmetics (when embalmed), dressing, and casketing. Includes minimum preparation and sanitary care when embalming is declined.

### **VISITATION (FOR A FIVE-HOUR PERIOD, USUALLY 4 TO 9 P.M.) .....\$1,295**

Includes use of all necessary facilities for visitation and viewing of the deceased, along with personnel to receive and care for visitors and flowers. Customary visitation times are from 4 to 9 p.m. Use of the visitation room for a private family viewing/gathering is available for \$195 per hour.

### **FUNERAL CEREMONY – FACILITIES AND STAFF .....\$1,095 (OR EQUIPMENT AND STAFF FOR SERVICE AT YOUR CHURCH, TEMPLE, OR OTHER FACILITY)**

Includes assistance planning the service, coordination with other parties involved in the service (such as clergy and musicians), setting up service area, receiving and caring for floral offerings, and staff supervision of the funeral ceremony.

### **GRAVESIDE OR OTHER COMMITTAL SERVICE ..... \$300**

Includes staff and equipment for the graveside, niche side, or other committal service.

### **HEARSE ..... \$395**

Within 35 miles of Cypress Lawn; beyond 35 miles, add \$4 per mile measured one way.

### **UTILITY VEHICLE/FLOWER CAR..... \$195**

Within 35 miles of Cypress Lawn; beyond 35 miles, add \$4 per mile measured one way.

## **TOTAL ITEMIZED CHARGES FOR A COMPLETE TRADITIONAL FUNERAL SERVICE .....\$8,765**

Most traditional funeral services include all of the items listed above. This is the total charge, listed for your convenience.

For your convenience, certain funeral services are available as a package at a discounted price. See our "Complete Service Packages."

**ADDITIONAL SERVICES AVAILABLE**

**MEMORIAL SERVICE (THE CASKET IS NOT PRESENT) ..... \$1,295**  
SATURDAYS AND SUNDAYS ..... \$1,495

Includes facilities and staff; assistance planning the service; coordination with other parties involved in the service (such as clergy and musicians); setting up the service area; receiving and caring for floral offerings; staff supervision of the memorial ceremony; and, if applicable, a committal service at the interment site.

**FACILITIES & STAFF FOR MEMORIAL SERVICE ..... \$2,495**

Our facilities and staff are available for a memorial service **when the cremation or burial arrangements have been made by another provider**. This charge includes a proportionate share of our Basic Services of Funeral Director and Staff.

**REFRIGERATION OR STORAGE AFTER 14 DAYS ..... \$95 PER DAY**

*California law requires a funeral establishment to refrigerate after 24 hours unless embalmed. This charge will apply to long-term storage and care of embalmed remains when requested by the family.*

**RECEPTION CENTER. .... \$795**

For the first two hours; thereafter is \$95 per hour.

**CASKETS AND OTHER MERCHANDISE**

**ADULT CASKETS ..... \$1,895 TO \$28,995**

A complete price list will be provided at the funeral home.

**INFANT AND CHILD CASKETS. .... AVAILABLE BY SPECIAL ORDER**

**ALTERNATIVE CONTAINERS ..... \$295**

A complete price list will be provided at the funeral home.

**CREMATION URNS ..... FROM \$195**

**AIR TRAY (REQUIRED WHEN SHIPPING BY AIR) ..... \$185**

**MEMORIAL REGISTER BOOKS ..... \$29 TO \$195**

**MEMORIAL FOLDERS (UP TO 1 PHOTO) FIRST 100 ..... \$85**

**MEMORIAL FOLDERS, SPECIAL, MORE THAN 3 PHOTOS.....\$135**

**MEMORIAL FOLDERS, PER ADDITIONAL 100..... \$50**

**PRAYER CARDS, STANDARD, PER 100. .... \$35**

**PRAYER CARDS, CUSTOM PHOTO, PER 100 ..... \$85**

**ASIAN CEREMONIAL ITEMS**

**ASIAN TRADITIONAL SERVICE PACKAGE..... \$168**

Includes family armbands and hairpiece, a food tray, large and small incense, and red and white envelopes.

**ASIAN TRADITIONAL BURNING PRODUCTS – PACKAGE “A” ..... \$388**

**CHINESE TRADITIONAL BLANKETS (“PEI”)**

- COMBINATION WHITE/COLORED FANCY ..... \$35 EA
- “FUT PEI” (BUDDHIST SCRIPTURE BLANKET) ..... \$108 EA
- CHRISTIAN BLANKET (WHITE/GOLD CROSS)..... \$108 EA
- GENERATION BLANKET ..... \$108 EA

## ADDITIONAL ITEMS/CASH ADVANCES

These items represent third-party goods and services, and cash that we advance on your behalf for these purchases.

### CERTIFIED COPIES OF THE DEATH CERTIFICATE

SAN FRANCISCO, SANTA CLARA, ALAMEDA COUNTIES .....	\$24
SAN MATEO COUNTY .....	\$26
CONTRA COSTA COUNTY .....	\$28

The price for certified copies is set by each county and is subject to change without notice.

**DISPOSITION PERMIT .....** **\$12**

**NEWSPAPER NOTICES .....** **AS QUOTED**

Your arranger will discuss newspaper notices with you. The cost depends on the newspaper(s) selected, the size of the notice, and the number of days published.

**AIRLINE TRANSPORTATION .....** **AS QUOTED**

**LONG-DISTANCE TRANSPORTATION .....** **AS QUOTED**

**CREMATORY FEE (M-F) (INCLUDED IN "DIRECT CREMATION") .....** **\$595**

CREMATORY FEE (SATURDAY) .....	\$995
CREMATORY FEE (SUNDAY) .....	\$1,595
CREMATORY FEE (WITNESS CREMATION) .....	ADDITIONAL \$800

There may be additional charges for expedited/"rush" cremation or oversize cremations. Your arranger will advise you.

**CONSULATE FEES, NOTARY PUBLIC, ETC. ....** **AS QUOTED**

See page 6.

**SCATTERING CREMATED REMAINS AT SEA .....** **\$250 AND UP**

Privately at our convenience; family is notified by mail.

**CORONER'S FEES .....** **AS QUOTED**

**MUSICIAN'S FEES .....** **AS QUOTED**

**CLERGY AND CHURCH HONORARIA AND FEES .....** **AS QUOTED**

**MOTORCYCLE ESCORTS .....** **\$275 EACH AND UP**

**LIMOUSINE, UP TO 8 PASSENGERS .....** **\$495**

Limousine and motorcycle escort service prices are based on four hours. Overtime charges will apply.

## INFANT OR CHILD SERVICES

As a service to our community and being sensitive to the unique nature of the loss of an infant or child, we provide our services for infants or children at a substantial discount. Please feel free to discuss any special needs with your arranger.

### MAXIMUM DISCOUNTS THROUGH INFANT-CHILD DISCOUNT PROGRAM

AGES 0-5 - 50% DISCOUNT .....	CEMETERY \$7,500/FUNERAL \$7,500; TOTAL \$15,000
AGES 6-12 - 40% DISCOUNT .....	CEMETERY \$6,250/FUNERAL \$6,250; TOTAL \$12,500
AGES 13-17 - 30% DISCOUNT .....	CEMETERY \$5,000/FUNERAL \$5,000; TOTAL \$10,000

Applies to immediate need arrangements only (no preneed). Discount applies to property, merchandise, and services; discounts are not allowed on cash advance items. If used, no promotional discounts are allowed. All facilities and resources are subject to availability. Balance due must be paid prior to delivery.

**LIMITED SERVICES**

**FORWARDING REMAINS TO ANOTHER FUNERAL HOME . . . . . \$4,295**

Includes initial transportation of the deceased from the place of death to Cypress Lawn; basic services of staff; embalming; other preparation of the deceased; family identification of the deceased; and transportation to the San Francisco International Airport. (Visitation, funeral services, receiving funeral director's charges, additional mileage, the casket, the shipping container, airline fees, other shipping charges, or other cash advance items are additional.)

**PROCESSING FEES FOR INTERNATIONAL SHIP OUT**

- LOCAL (SF) CONSULATE ONLY . . . . . \$195
- PHILIPPINE CONSULATE (U.S. PASSPORT) . . . . . \$220  
(\$195 SERVICE FEE, PLUS \$25 CASH ADVANCE TO THE CONSULATE)
- PHILIPPINE CONSULATE (PHILIPPINE PASSPORT) . . . . . \$245  
(\$195 SERVICE FEE, PLUS \$50 CASH ADVANCE TO THE CONSULATE)
- IF APOSTILLES OR TRIP TO SACRAMENTO ARE REQUIRED . . . . . \$395

**These fees do not include** monies paid out for consulates (unless indicated), apostilles, express postage, etc. Those items will be added under Cash Advances.

**RECEIVING REMAINS FROM ANOTHER FUNERAL HOME . . . . . \$2,095**

If arrangements are made entirely through Cypress Lawn, this includes transfer from the San Francisco International Airport; basic services of staff; family identification of the deceased; and a hearse to the local place of final disposition. (Visitation, funeral services, sending funeral director's charges, airline transportation, the casket, the shipping container, and cash advance items are not included.)

If the forwarding/transportation arrangements have been made entirely through another funeral home, and we are simply receiving at the airport and transporting to the graveside, our charges will be only for removal from the airport (\$695) and the hearse (\$395). Add \$300 if the family will be present for graveside services. These charges are customarily forwarded with the deceased by the shipping funeral director. A contract will be faxed to them.

**IMMEDIATE BURIAL . . . . . FROM \$3,795**

**Immediate burial takes place at the convenience of the funeral home without the attendance of family or friends.** Includes initial transportation of the deceased from the (local) place of death to Cypress Lawn; basic services of staff; refrigeration; other preparation of the deceased; and family identification of the deceased (limited to six people for 20 minutes). Transfer to the grave is at our convenience. Does not include other services or ceremonies.

- IMMEDIATE BURIAL WITH CASKET PROVIDED BY CUSTOMER. . . . . \$3,795
- IMMEDIATE BURIAL WITH MINIMUM CASKET . . . . . \$5,690  
(PACIFICA, LIGHT COLOR WOOD)
- IMMEDIATE BURIAL WITH OTHER CASKET  
SELECTED FROM OUR FUNERAL HOME . . . . . \$3,795 PLUS COST OF CASKET SELECTED

**GRAVESIDE SERVICE ONLY. . . . . FROM \$4,095**

Includes initial transportation of the deceased from the (local) place of death to Cypress Lawn; basic services of staff; refrigeration; other preparation of the deceased; family identification of the deceased (limited to six people for 20 minutes); and the hearse. (Additional mileage, flowers, a flower car, the casket, embalming with or without other services, other merchandise, and cash advanced items are additional.)

**DISINTERMENT . . . . . FROM \$2,495 UP  
AS QUOTED BY MANAGEMENT**

Includes processing necessary documents and staff supervision and transportation to (local) place of disposition. For disposition of a used casket, add \$125.

## CREMATION SERVICES

Because we own and operate our own crematory on Cypress Lawn premises, your loved one never leaves our care, and our 10-step Cremation with Confidence™ Guarantee assures you of the highest professional standards.

### TRADITIONAL SERVICES FOLLOWED BY CREMATION

Any traditional service, including visitations, viewings, or other gatherings, may be followed by cremation. See our full range of cremation packages on pages 12-13.

### CREMATION WITH A MEMORIAL SERVICE

This is a direct cremation with a memorial service.

**SILVER CREMATION PACKAGE . . . . . MONDAY–FRIDAY \$5,190**  
**SATURDAYS AND SUNDAYS . . . . . \$5,390**

This package includes all of the services described in Direct Cremation (see below), plus our facilities, staff, and equipment for a memorial service or gathering. This package does not include merchandise such as a casket or cremation container, urn, flowers, or other items not specified.

### DIRECT CREMATION

Cremation only. There is no visitation, funeral, or memorial service.

**DIRECT CREMATION . . . . . FROM \$3,600**

Our charge for Direct Cremation includes initial transportation of the deceased from the (local) place of death to the funeral home; basic services of staff; refrigeration for up to three days; a utility vehicle; private family identification if desired; and the crematory fee at Cypress Lawn Crematory (\$595 from Monday through Friday). If the crematory fee has been prepaid, we will credit you this amount. If you wish to arrange a direct cremation, you may use an “alternative container” instead of a casket. Alternative containers encase the body and can be made of materials with fiberboard or composition board (with or without an outside covering). The containers we provide are made of presswood.

**DIRECT CREMATION WITH CONTAINER PROVIDED BY CUSTOMER . . . . . \$3,600**

**DIRECT CREMATION WITH MINIMUM CONTAINER . . . . . \$3,895**  
(STANDARD, \$295)

**DIRECT CREMATION WITH CASKET OF YOUR CHOICE FROM OUR FUNERAL HOME. . . . . \$3,600 PLUS COST OF CASKET SELECTED**

**WITNESS CREMATION – ADDITIONAL CHARGE. . . . . \$800**

**OVERSIZE CREMATION – ADDITIONAL CHARGE . . . . . \$300**

For the additional time and care required, an additional charge is incurred for cremation when the total weight (decedent plus container/casket) exceeds 300 lbs.

**CREMATION RUSH FEE – ADDITIONAL CHARGE . . . . . AS QUOTED**

Please discuss any special needs you may have with our staff. We will be glad to do all we can to meet any special requirements. Under certain circumstances, there may be additional charges for “rush” or “expedited” cremation services; our staff will advise you.

Additional charges apply for cremations performed by request on Saturdays or Sundays.

Because we believe a final farewell is an important step in the healing process, we provide a short time for identification and a family farewell without an additional charge. This is not a traditional viewing or visitation. It is a brief, 20-minute scheduled time for immediate family (no more than six) to view the body in one of our visitation rooms. This is not a funeral service. We ask that this be scheduled within three days of your loved one being brought into our care. If we are asked to schedule this time beyond these three days, a daily charge of \$95 will apply for refrigeration and care. If more than six people attend this private time, and/or if the time exceeds 20 minutes, we reserve the right to impose an additional charge of \$895 for visitation. If you wish us to dress the body in clothing you provide, please add the charge for “Other Preparation of Remains” for \$400. Otherwise, we will present your loved one as dressed (if appropriate) or we will provide a simple gown.

### OTHER OPTIONS WHEN ARRANGING CREMATION

**RECEPTION CENTER:** See page 14.

**URNS AND KEEPSAKES:** We also offer a range of keepsake-size urns and memorial jewelry for those who want to keep a small portion of cremated remains – or perhaps flower petals or soil from the burial site.



## COMPLETE SERVICE PACKAGES FOR BURIAL OR CREMATION

The packages shown here are a convenient way to plan funeral arrangements, plus they offer a significant cost savings as compared to arrangements selected on an itemized basis. These are package offerings, and there is no credit or substitution for items not used. **These discounted packages are offered only with the purchase of any casket from our funeral home.** These packages do not include cemetery or crematory fees or other third-party expenses.

### CYPRESS LAWN'S SIGNATURE SERVICES

All Cypress Lawn Complete Funeral Packages include the following at no additional cost:

- Online obituary and guestbook (your own family memorial website) – \$295 value
- Customized photo slideshow prepared from family photographs – \$125 value
- Livestreaming service from our chapel or church – \$395 value
- Customized memorial guestbook, programs, and prayer cards – over \$155 value
- Acknowledgement cards to thank those who have sent flowers or made donations – \$35 value
- Traditional carnation boutonnieres and gloves for pallbearers – \$95 value
- Travel Plan Membership\* covering most transportation costs if a participant dies 75+ miles from home – \$495 value  
*\*Included in preneed package purchases only*
- Private time to approve hairstyling, cosmetics, and presentation
- Professional quality digital keyboards in our chapels
- Quality display tables, easels, and other equipment

### CASKET UPGRADES AND SUBSTITUTIONS ARE AVAILABLE FOR ALL PACKAGES

The difference above the package's casket cost is added to the total package price.  
Package discount will not change.





# LOTUS FUNERAL PACKAGES

## Complete Funeral Package • One-Day Service with Chinese Traditions

Basic Services of Funeral Director and Staff.....	\$3,395
Transfer to Funeral Home .....	\$695
Embalming or Refrigeration.....	\$995
Other Preparation of Remains.....	\$400
Funeral Ceremony.....	\$1,095
Graveside Service.....	\$300
Hearse .....	\$395
Flower Car .....	\$195

## Platinum Package

Complete Funeral Package Plus Casket

Casket .....	\$13,800
PACKAGE DISCOUNT .....	-\$2,275
<b>PACKAGE PRICE .....</b>	<b>\$18,995</b>



Atherton



Pacific Mandarin



Paragon

## Gold Package

Complete Funeral Package Plus Casket

Casket .....	\$9,095
PACKAGE DISCOUNT.....	-\$1,570
<b>PACKAGE PRICE .....</b>	<b>\$14,995</b>



**Cardinal**  
Also Available in  
Red or White



Hamden



Marquis



Courtney



Lotus



Princeton

## Silver Package

Complete Funeral Package Plus Casket

Casket .....	\$6,495
PACKAGE DISCOUNT.....	-\$1,370
<b>PACKAGE PRICE .....</b>	<b>\$12,595</b>



Blue Argent



Pieta



Presidium



Sahara Carmel



Testament

IN ADDITION TO OUR CYPRESS LAWN SIGNATURE SERVICE ITEMS, OUR SPECIAL LOTUS PACKAGES INCLUDE THESE ADDITIONAL TRADITIONAL ITEMS AT NO ADDITIONAL COST: Traditional armbands; hair bows; red and white envelopes; incense large and small; up to six combination white/colored fancy blankets; and one scripture or Christian traditional blanket. Additional blankets, burning items, etc., are available at additional cost.

# LEGACY FUNERAL PACKAGES

## Complete Funeral Package • Two-Day Traditional Service

Basic Services of Funeral Director and Staff.....	\$3,395
Transfer to Funeral Home .....	\$695
Embalming or Refrigeration.....	\$995
Other Preparation of Remains.....	\$400
Visitation .....	\$1,295
Funeral Ceremony.....	\$1,095
Graveside Service.....	\$300
Hearse .....	\$395
Flower Car .....	\$195

## Platinum Package

Complete Funeral Package Plus Casket

Casket .....	\$5,295
PACKAGE DISCOUNT .....	-\$1,165
<b>PACKAGE PRICE .....</b>	<b>\$12,895</b>



**Bradley**



**Monaco**



**Purity**



**Sheraton**



**Tender Blush**



**Victoria**



**White Pearl**



**Woodridge**

## Gold Package

Complete Funeral Package Plus Casket

Casket .....	\$4,895
PACKAGE DISCOUNT .....	-\$1,065
<b>PACKAGE PRICE .....</b>	<b>\$12,595</b>



**Coral**



**Donavon**



**White Sand**



**Portland Blue**



**Portland Rose**

## Silver Package

Complete Funeral Package Plus Casket

Casket .....	\$2,295
PACKAGE DISCOUNT .....	-\$665
<b>PACKAGE PRICE .....</b>	<b>\$10,395</b>



**Ariel** Available in Silver, Blue, Copper, Orchid, and White



**Longmont**



# TRIBUTE FUNERAL PACKAGES

## Complete Funeral Package · One-Day Traditional Service

Basic Services of Funeral Director and Staff .....	\$3,395
Transfer to Funeral Home .....	\$695
Embalming or Refrigeration .....	\$995
Other Preparation of Remains .....	\$400
Funeral Ceremony .....	\$1,095
Graveside Service .....	\$300
Hearse .....	\$395
Flower Car .....	\$195

## Platinum Package

### Complete Funeral Package Plus Casket

Casket .....	\$5,295
PACKAGE DISCOUNT .....	-\$1,070
<b>PACKAGE PRICE .....</b>	<b>\$11,695</b>



**Bradley**



**Monaco**



**Purity**



**Sheraton**



**Tender Blush**



**Victoria**



**White Pearl**



**Woodridge**

## Gold Package

### Complete Funeral Package Plus Casket

Casket .....	\$4,895
PACKAGE DISCOUNT .....	-\$870
<b>PACKAGE PRICE .....</b>	<b>\$11,495</b>



**Coral**



**Donavon**



**White Sand**



**Portland Blue**



**Portland Rose**

## Silver Package

### Complete Funeral Package Plus Casket

Casket .....	\$2,295
PACKAGE DISCOUNT .....	-\$470
<b>PACKAGE PRICE .....</b>	<b>\$9,295</b>



**Ariel** Available in Silver, Blue, Copper, Orchid, and White



**Longmont**





CREMATION PACKAGES

Platinum

Two-Day Service Followed By Cremation

Basic Services of Funeral Director and Staff.....	\$3,395
Transfer to Funeral Home .....	\$695
Embalming or Refrigeration.....	\$995
Other Preparation of Remains.....	\$400
Visitation .....	\$1,295
Funeral Ceremony.....	\$1,095
Graveside Service.....	\$300
Hearse .....	\$395
Flower Car .....	\$195
Standard Cremation (M-F).....	\$595

CHOICE OF CASKET:



Donavon



Drake



Westland

Casket .....	\$4,895
PACKAGE DISCOUNT .....	-\$1,160
<b>PACKAGE PRICE .....</b>	<b>\$13,095</b>

Gold

One-Day Service Followed By Cremation

Basic Services of Funeral Director and Staff.....	\$3,395
Transfer to Funeral Home .....	\$695
Embalming or Refrigeration.....	\$995
Other Preparation of Remains.....	\$400
Funeral Ceremony.....	\$1,095
Graveside Service.....	\$300
Hearse .....	\$395
Flower Car .....	\$195
Standard Cremation (M-F).....	\$595

CHOICE OF CASKET:



Kently



Pacifica

RENTAL  
CASKETS  
ALSO  
AVAILABLE

Casket .....	\$1,895
PACKAGE DISCOUNT .....	-\$465
<b>PACKAGE PRICE .....</b>	<b>\$9,495</b>



## Silver

Cremation with Memorial Service

Basic Services of Funeral Director and Staff.....	\$3,395
Transfer to Funeral Home .....	\$695
Memorial Service .....	\$1,295
Standard Cremation (M-F).....	\$595
Alternative Container.....	\$295

**CHOICE OF ALTERNATIVE CONTAINER:** Standard

TOTAL ITEMIZED PRICE .....	\$6,275
PACKAGE DISCOUNT .....	-\$1,085
<b>PACKAGE PRICE .....</b>	<b>\$5,190</b>

## Direct Cremation

Cremation Services Only

Basic Services of Funeral Director and Staff.....	\$3,395
Transfer to Funeral Home .....	\$695
Standard Cremation (M-F) .....	\$595
Alternative Container.....	\$295

TOTAL ITEMIZED PRICE .....	\$4,980
PACKAGE DISCOUNT .....	-\$1,085
<b>PACKAGE PRICE .....</b>	<b>\$3,895</b>

\*Note: The Signature Services mentioned on page 8 are not included with direct cremation services.

**PLEASE TURN TO PAGE 7 TO READ MORE DETAILS ABOUT CYPRESS LAWN'S DIRECT CREMATION SERVICES.**





**THE RECEPTION CENTER**

A beautiful and convenient place for after-service receptions as well as for those who wish to provide their guests with food and beverage during the visitation or evening service.

**SEATING ACCOMMODATION FOR UP TO 77 GUESTS**

- 11 round tables (54-inch diameter)
- 7 chairs at each table

**\$795 FOR THE FIRST TWO HOURS** (\$295 WHEN USING CYPRESS LAWN CATERING SERVICES)  
**\$95 PER ADDITIONAL HOUR**

Please make reservations for the reception center through the funeral home office.

**SPECIAL WAYS TO CELEBRATE A SPECIAL LIFE**

Services can be simple, elaborate, traditional, or unique. No matter what your choices are, you can depend on us to provide caring support and guidance every step of the way.



**PERSONALIZED MEMORIAL STATIONERY**

From simple prayer cards to memorial folders featuring an order of service and obituary, we can help you create a special printed tribute for your family and guests.

STANDARD PRAYER CARDS, PER 100 .....	\$35
CUSTOM PHOTO PRAYER CARDS, PER 100 .....	\$85
MEMORIAL FOLDER OR PROGRAM	
UP TO ONE PHOTO.....	\$85 FOR FIRST 100
MULTIPLE PHOTOS.....	\$125 FOR FIRST 100
ADDITIONAL MEMORIAL FOLDERS.....	\$50 PER 100



**BALLOON RELEASE**

Colorful (or white) helium balloons (natural latex for environmental friendliness) are provided for your guests. They are set free in unison, symbolizing the spirit soaring heavenward.

\$2.99 EACH



**CUSTOM PHOTO TRIBUTE**

With photographs you provide, our staff creates a custom video tribute set to music that you can view at the visitation, service, or reception.

\$125 – INCLUDES UP TO 28 PHOTOGRAPHS
ADD \$30 PER ADDITIONAL 10 PHOTOS
ADD \$30 TO INCLUDE CUSTOM MUSIC
ADDITIONAL COPIES – \$20 EACH





## OPTIONS FOR UNIQUE, PERSONALIZED TRIBUTES

There are countless ways in which a funeral ceremony can be tailored to the life and personality of the person you are honoring. A meaningful funeral is one that touches the hearts of those who attend. Here are just a few of the things we can provide or arrange to help make the service a truly personalized tribute.

### MILITARY HONORS

All honorably discharged Veterans are entitled to a military honors ceremony, including a flag presentation and the playing of Taps. Provide us with the military discharge papers (form DD-214), and we will take care of the rest.

*Military honors are provided at no charge.*



### DOVE RELEASE

White doves – a symbol of peace – released to soar heavenward and then safely home. A professional attendant will provide the number you desire and help those you designate to set them free.

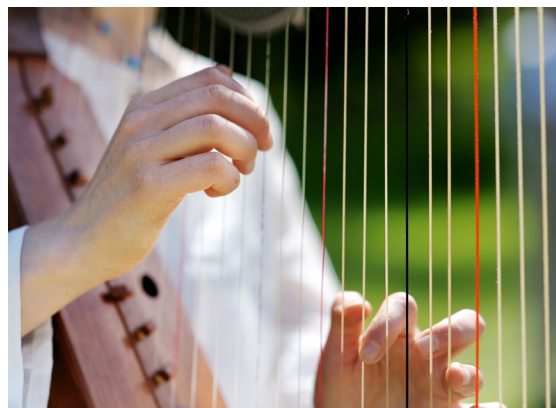
*Prices may vary.*



### SPECIAL MUSICIANS

We can arrange the services of first-class musicians to enhance your memorial event. A bagpiper is an ancient and honorable tribute. A harpist can help create a beautiful, peaceful setting. The possibilities with special music are truly endless.

*Prices vary depending on the musician.*



### MEMORIAL REFLECTIONS TRIBUTE PORTRAITS

Provide a favorite photograph and choose a design from our wide selection. These high-quality portrait banners make a perfect focal point for a memorial service, reception, or other gathering. Each 3' by 6' banner includes six 8" by 10" memento size prints suitable for framing.

Our catalogue displays the many designs available.

*\$495, includes use of display equipment.*

*Additional 8"x10" memento prints – 6 for \$100.*





## **SERVING THE SAN FRANCISCO BAY AREA**

### **Cypress Lawn Funeral Home & Memorial Park**

1370 El Camino Real, Colma, CA 94014  
(650) 550-8808

FD# 1797

### **Sneider & Sullivan & O'Connell's Funeral Home & Cremation Service**

977 S. El Camino Real, San Mateo, CA 94402  
(650) 343-1804

FD# 230

### **Miller-Dutra Coastside Chapel**

645 Kelly Ave, Half Moon Bay, CA 94019  
(650) 726-4474

FD# 40

### **Crosby-N. Gray & Co. Funeral Home & Cremation Service**

2 Park Rd, Burlingame, CA 94010  
(650) 342-6617

FD# 96



TO ACCESS A DIGITAL  
VERSION OF THIS  
GENERAL PRICE LIST,  
SCAN THE QR CODE:

